



Fire protection systems

EI120(ho, ve, i↔o)S

Fire dampers INLAP and INLAP-ST

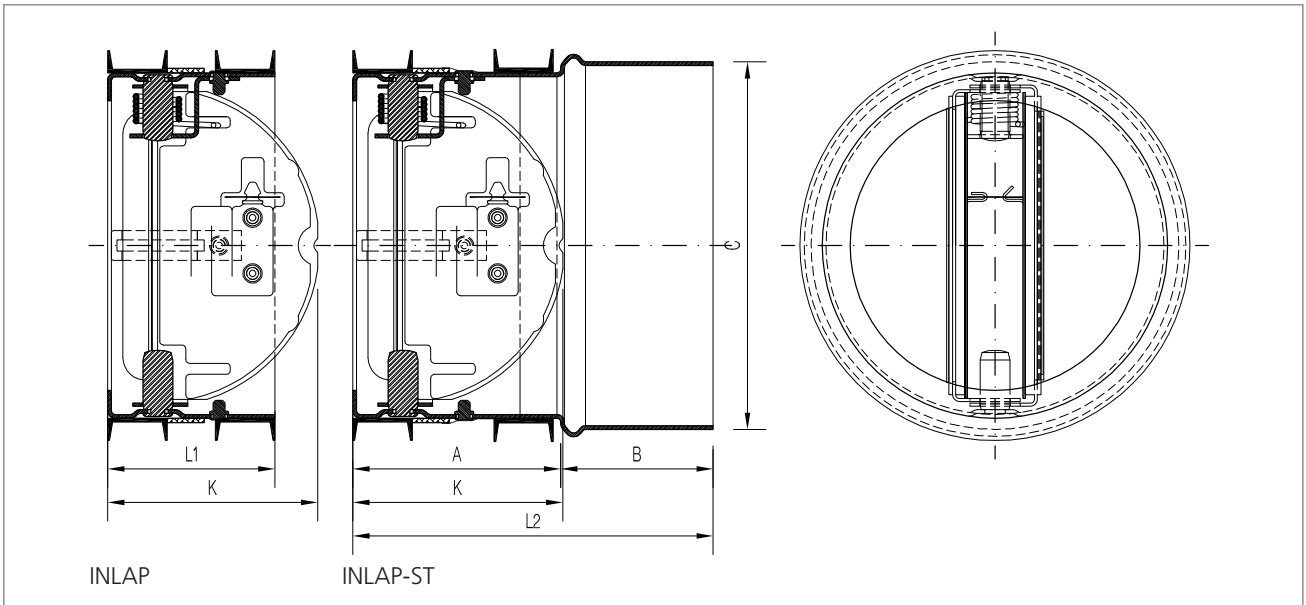
1139-CPR-1046/12 certificate
of constancy of performance



www.airfiretech.at

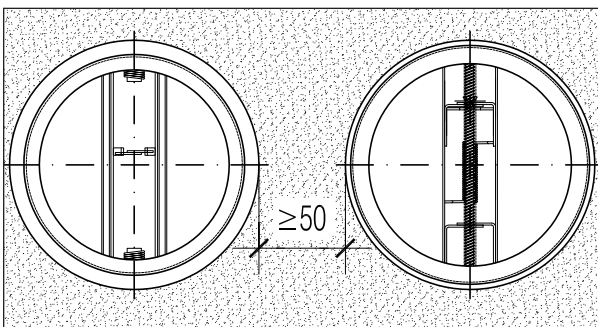
“We recommend installing the fire dampers in combination with cold smoke dampers.”

Design drawing

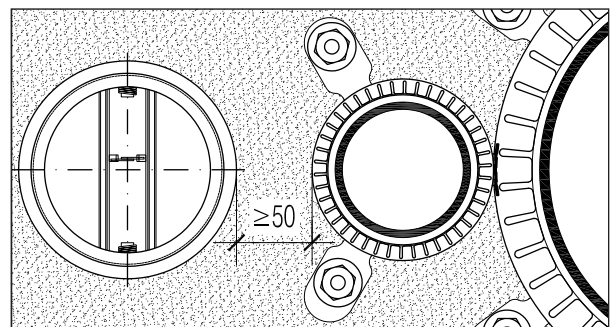


INLAP und INLAP-ST							
Type	L1 [mm]	Type	A [mm]	B [mm]	C Ø [mm]	L2 [mm]	K [mm]
INLAP/DN100	45	INLAP-ST/DN100	56	41	99	97	58
INLAP/DN125	45	INLAP-ST/DN125	56	41	124	97	72
INLAP/DN160	45	INLAP-ST/DN160	56	41	159	97	89
INLAP/DN200	50	INLAP-ST/DN200	61	41	199	102	106
INLAP/DN250	50	INLAP-ST/DN250	61	41	249	102	132

Distance rule for fire dampers

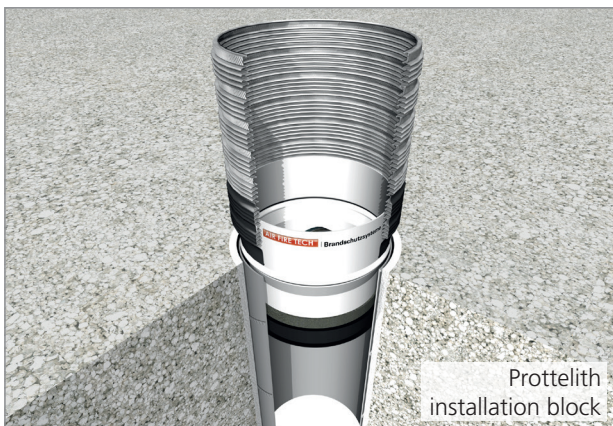
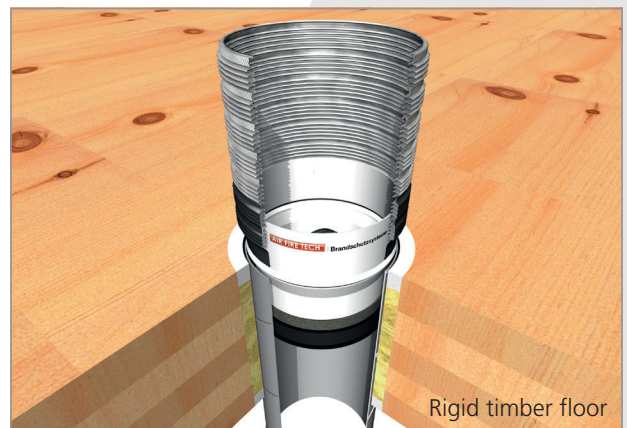
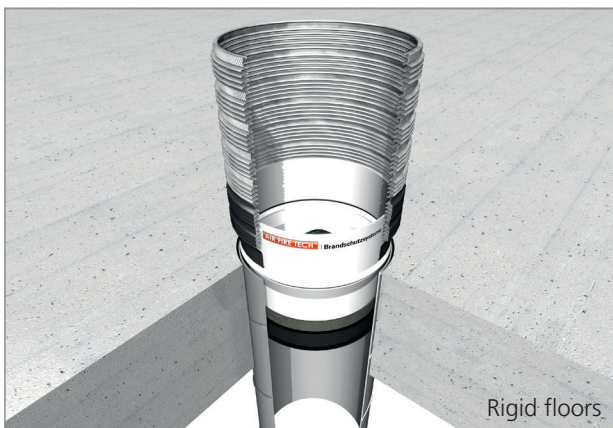
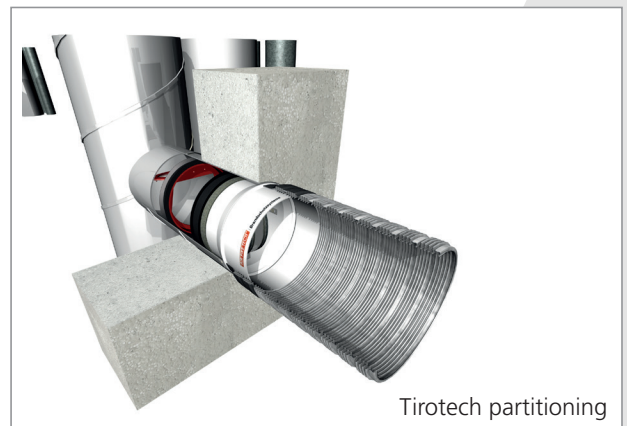
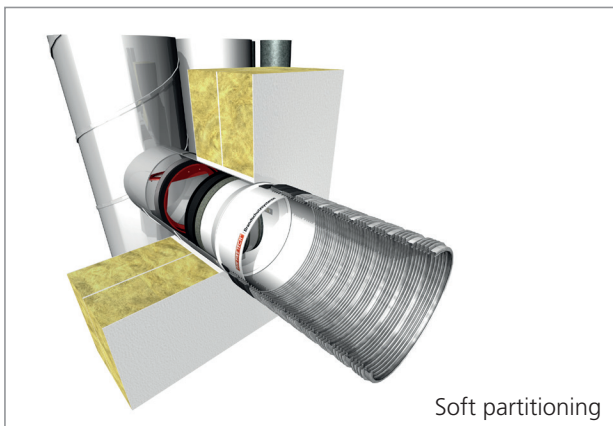
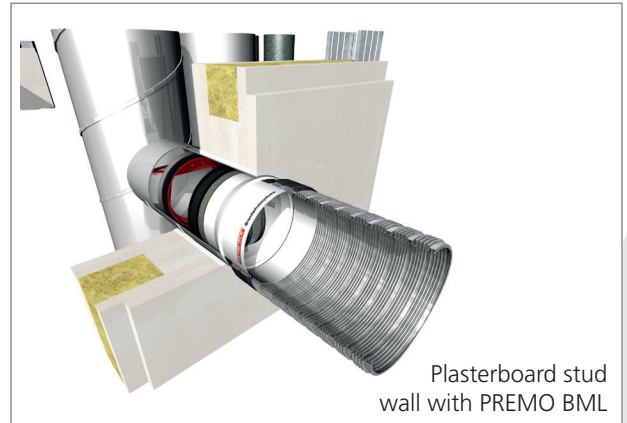
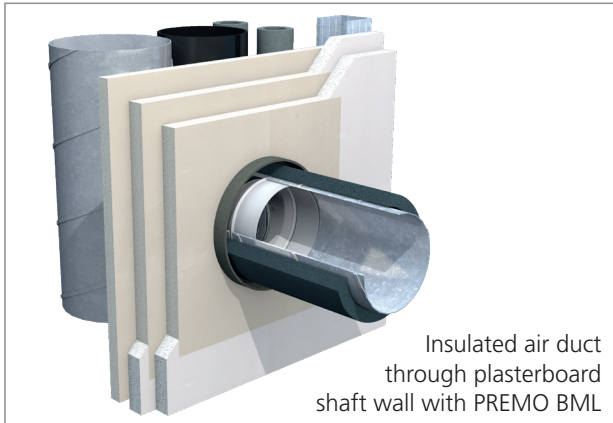


Distance between Air Fire Tech fire dampers (1139-CPR-1046/12) and Air Fire Tech fire damper air vents ≥ 50 mm.



Distance between Air Fire Tech fire dampers (1139-CPR-1046/12) and neighbouring Air Fire Tech fire protection collars (ETA-13/0758) ≥ 50 mm.

Application examples





Brandschutzsysteme

Hanuschgasse 1 / Top 4A
A-2540 Bad Vöslau
T: +43 1 982 01 74-0
F: +43 1 982 01 74-930
E: office@airfiretech.at

*“Our employees provide
advice from planning
to installation
throughout Austria.”*